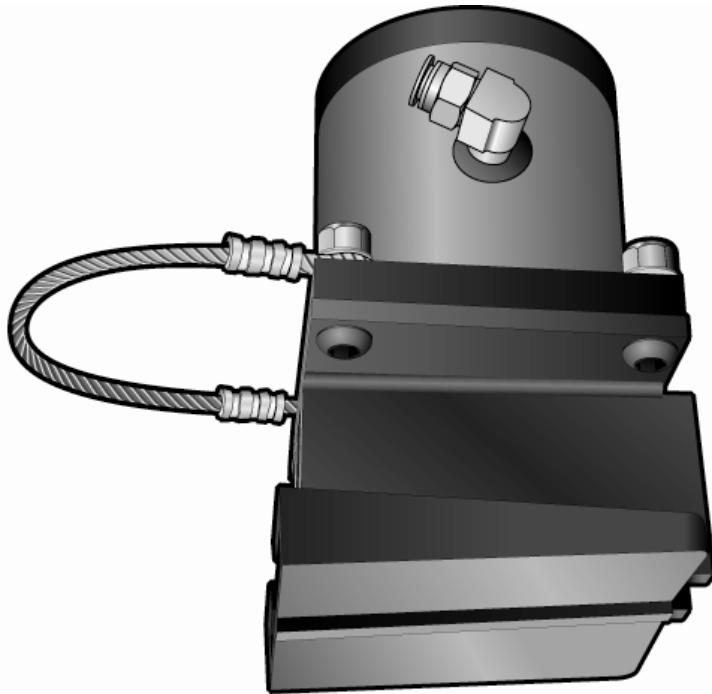


THE POCKET ROCKET Wedge-Mount Vibrator



PART #

46000

**Replacement Brackets
also available**

PART #

14HRSL

Lightweight, quiet and powerful, are three words synonymous with the **POCKET-ROCKET®** wedge-mount Vibrator Assembly. With a urethane shoe wedge bracket, an easy-grip handle and weighing only 27 Lbs., the POCKET ROCKET is quiet and extremely portable. The unique urethane shoe bracket design eliminates noisy metal to metal contact with the Railcar, allowing the the vibrator to operate at less than 82 DBA. The vibrator is a compact, powerful, non-impacting linear vibrator that is highly air efficient — only 16 CFM at 90 PSI.

Each POCKET ROCKET comes equipped with:

- ◆ 6 ft Hose Whip
- ◆ Locking Ball Valve w/ Universal Coupling
- ◆ 1 Qt. Vibra-Lube Vibrator Oil
- ◆ 5 micron Filter, Regulator, Lubricator Combo

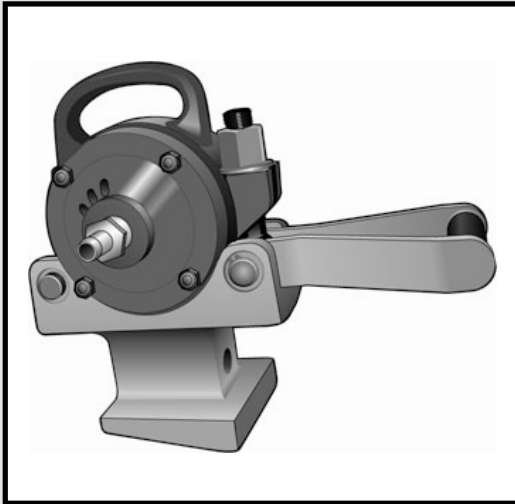
Pocket Rocket is registered trademark of Martin Engineering.

WORKMASTER

Ph: 866.476.9217

Fx: 484.325.2961

THE CAR ROCKER Wedge Mount Vibrator

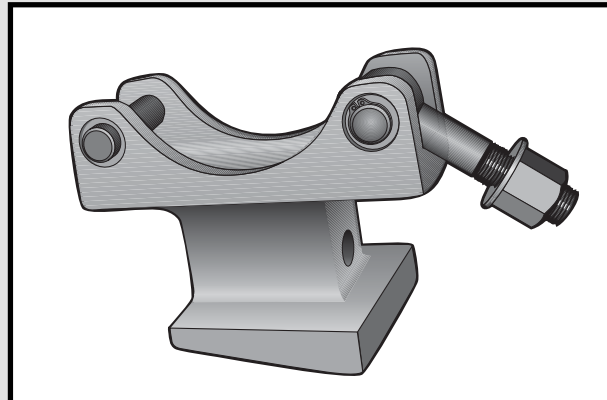


The Dual Roller CAR ROCKER Pneumatic Vibrator is ideal for applications that require high frequency and high force. **WORKMASTER's** CAR ROCKER Vibrator Assembly is one of the original heavy-duty vibrators specified for unloading railcars. With only three moving parts (vane, inner, and outer roller) the vibrator has a long wear life and requires little maintenance.

ASSEMBLY	PART #
CR-5500 w/ Bracket	16-17119
CR-6500 w/ Bracket	16-17120

PERFORMANCE DATA		FREQUENCY (VPM)			FORCE OUTPUT (LBS)			AIR CONSUMPTION (CFM)		
ASSEMBLY	UNBALANCE	40 PSI	60 PSI	80 PSI	40 PSI	60 PSI	80 PSI	40 PSI	60 PSI	80 PSI
CR-5500	1.4	9750	12500	15000	4100	6000	9750	40	54	57
CR-6500	3.4	7800	9800	11000	5500	8700	10400	32	41	49

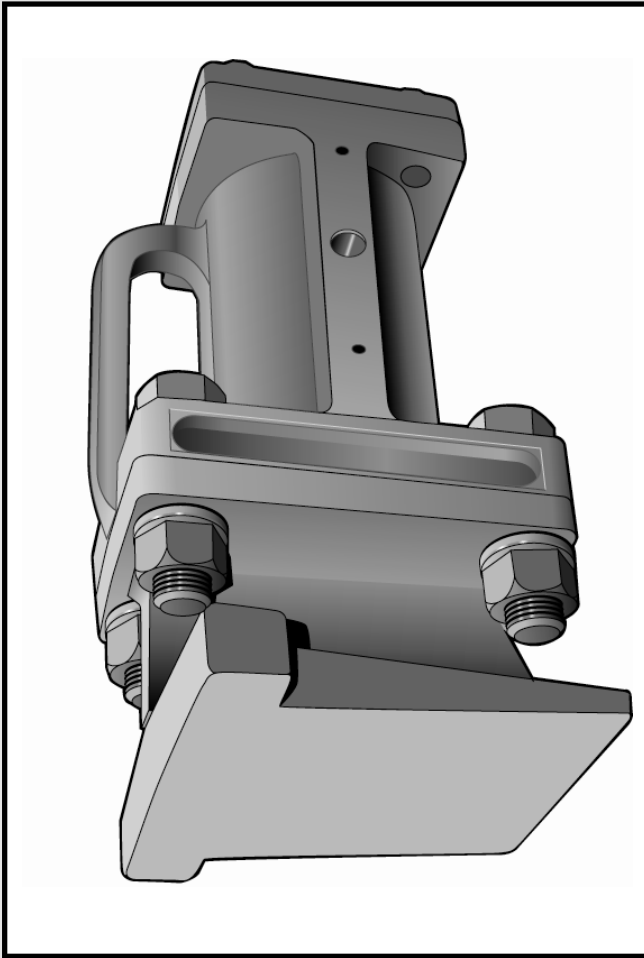
The lug bracket is the highest quality mount available. It features heavy-duty, cast steel construction, and the seat of the wedge bracket is machined to match the curve of the vibrator body, ensuring complete contact for a secure mount.



Assembly components available.

COMPONENTS	PART #
CR-5500 VIBRATOR	16-17319
CR-6500 VIBRATOR	16-17320
WEDGE BRACKET	32-17325

THE RAIL-SHAKER Wedge-Mount Vibrator



Opening a Hopper Car Gate is one thing, getting material to flow out is an entirely different problem. But not with **WORKMASTER's** air driven RAIL-SHAKER wedge-mount Vibrator. The assembly's wedge-end fits all standard hopper car side brackets and its top lugs keep the RAIL-SHAKER from jamming in the pocket. The vibrator pounds the wall of the hopper car like a fast acting sledge hammer, and its high frequency stimulates the material inside, producing instant and consistent flow.

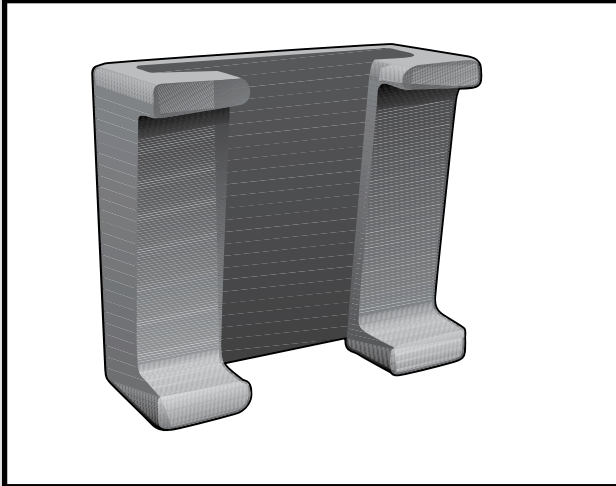
PART #
13-15210

FREQUENCY (VPM)			FORCE OUTPUT (LBS)			AIR CONSUMPTION (CFM)		
40 PSI	60 PSI	80 PSI	40 PSI	60 PSI	80 PSI	40 PSI	60 PSI	80 PSI
1850	2000	2200	590	845	1025	9.1	17.0	21.0

Assembly components also available.

COMPONENT	PART #
PISTON VIBRATOR	13-15100
STEEL BRACKET	30-17210
FASTENER KIT	32-15400

VIBRATOR MOUNT BRACKET



PART #

32-17327

Missing or damaged railcar wedge brackets combined with stubborn, slow moving material, make unloading the Railcar nearly impossible.

WORKMASTER's weld-on Vibrator Mount Bracket provides an easily installed mounting pocket that transmits maximum vibration from the vibrator to the railcar. Always keep a pair of these cast iron brackets around your unloading site and you'll never be slowed by missing or damaged brackets again!