

# WORKMASTER®

WE FIND A WAY — OR MAKE ONE!



# GO-B3

## HOPPER CAR GATE OPENER

Address: 284 Three Tun Rd.  
Malvern PA, 19355  
Phone: 267.350.2809  
Email: [info@workmaster.net](mailto:info@workmaster.net)

## GO-B3

### HOPPER CAR GATE OPENER



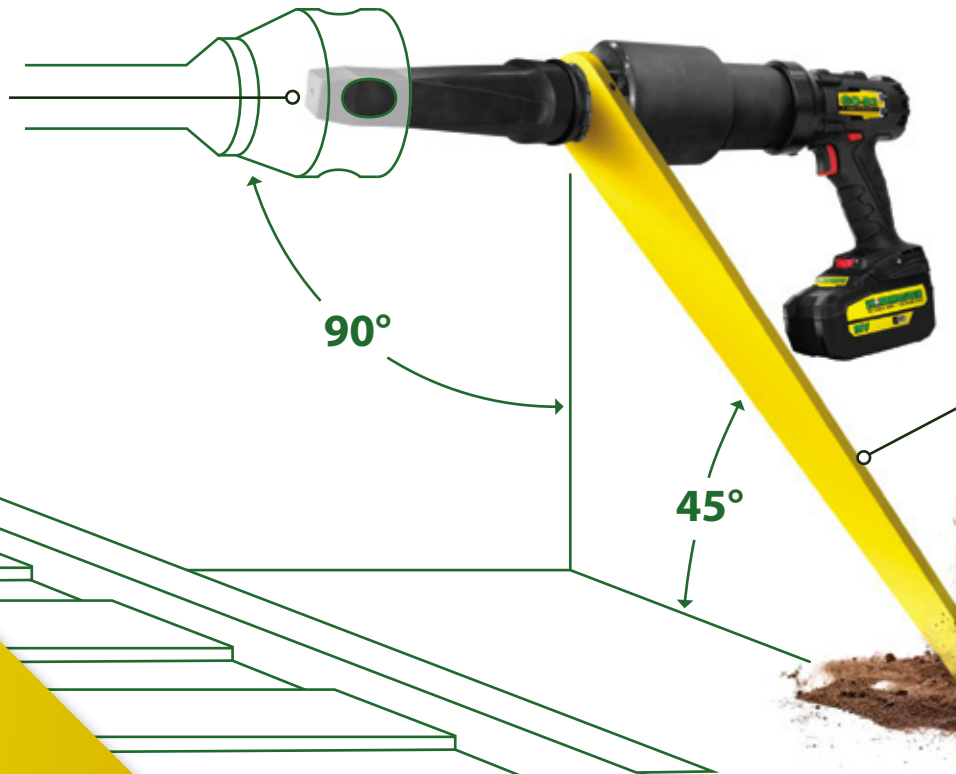
The **GO-B3** is a battery-driven, torque-controlled, portable power tool that produces up to 3000 ft-lbs of torque to open hopper car gates that are easy to moderately-difficult to open. Although the Opener, at 38.5 lbs, is compact and lightweight, because it is a torque wrench, it does require the use of an easy to attach torque reaction arm for safety. The GO-B3 is supplied with two (2) long lasting HD Lithium-Ion batteries which, if properly maintained, will open hundreds of hopper cars for years. The GO-B3 is ideal for:

- Unloading sites that receive occasional to light hopper car traffic;
- Railcars that vary from easy-to-open to moderately difficult;
- Neither compressed air nor electric power is available or is limited;
- Majority of railcars have fixed position gate mechanisms;
- Trackside surface is level, smooth, and unobstructed;
- Narrow decks or platforms preclude wheeled-cart or beam-mounted Opener;
- Site security requires portable, easy to remove and store tools

### THE GO-B3

THE GO-B3 GENERATES AN OPERATOR PACED MAXIMUM POWER OUTPUT OF 3,000 LB-FT.

Simply align the **GO-B3** perpendicular to the railcar's Capstan Socket and firmly seat the Capstan Drive Fitting into the car's Capstan Socket.



The **Torque Reaction Arm** securely positions itself against the ground or a stationary object with the press of a trigger.

# GO-B3

## HOPPER CAR GATE OPENER

**WORKMASTER**  
WE FIND A WAY — OR MAKE ONE!



### BATTERY POWERED

Operates at sites where air or electric power is not available.

### LIGHTWEIGHT PORTABILITY

Enables one worker to easily carry and position this 38.5 lb powerhouse in the gate's capstan, and thereby improve safety, increase productivity, and reduce costs.

### QUICK CHARGE BATTERY

Lithium-Ion HD Battery fully charges in under 60 minutes.

### SMOOTH, CONTINUOUS FORCE

Facilitates steady, controlled gate opening without concern for wear of gate mechanism.

### STURDY CARRYING BAG

Allows convenient storage of all components, and easy transport to/from the unloading site.

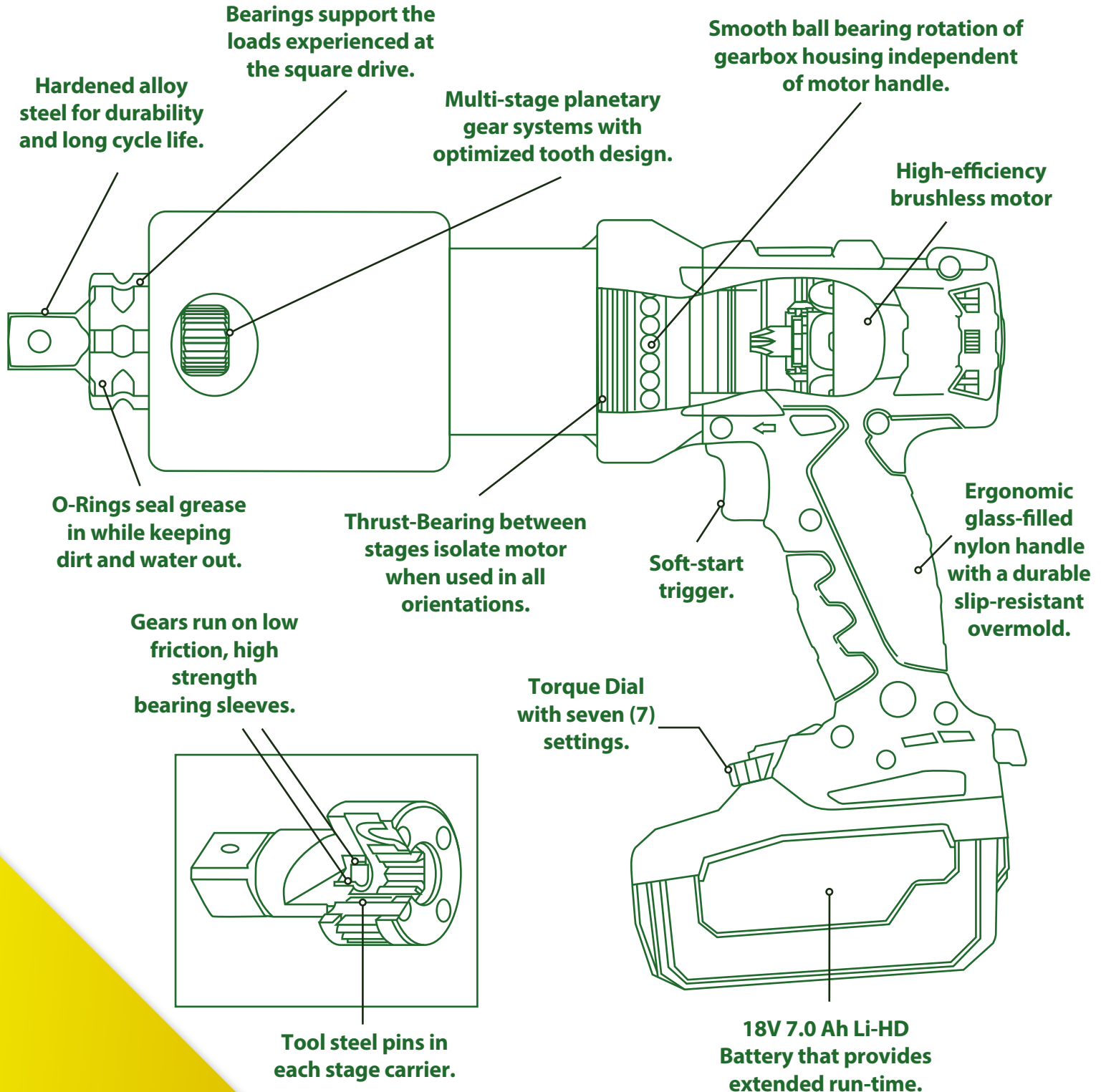
SPECIFICATIONS	
MODEL	GO-B3 Battery Powered Gate Opener
SQUARE DRIVE	1"
MIN.TORQUE	750 ft-lbs – Setting #1
MAX TORQUE	3000 ft-lbs – Setting #7
WEIGHT (Tool; Drive Fitting; Battery)	27.5 lbs
WEIGHT (Tool; Drive Fitting; Battery; Reaction Arm)	38.5 lbs
RPM at Min. Torque	0.5
RPM at Max Torque	2
Charger Requirements	120V/1Ph/50-60Hz & 240V1Ph/50-60Hz
Included	(1) Capstan Drive Fitting w/ Pin & O-Ring Retainer; (1) Torque Reaction Arm w/ soc hd shoulder bolt and 1/8"Hex Key; (2) HD Li-Ion Batteries; (1) Battery Charger; (1) Sturdy Carrying Bag; (1) Operator's Guide
Shipping Weight	53 lbs

### Workmaster® line of Hopper Car Unloading Products

ranging from our wide selection of Gate Openers, Railcar Vibrators and Brackets to our railcar Pocket-to-Undertrack-Conveyor Connectors, offers total solutions to the dangerous and time consuming problems of unloading hopper cars.



## GO-B3 Features



# GO-B3

## HOPPER CAR GATE OPENER

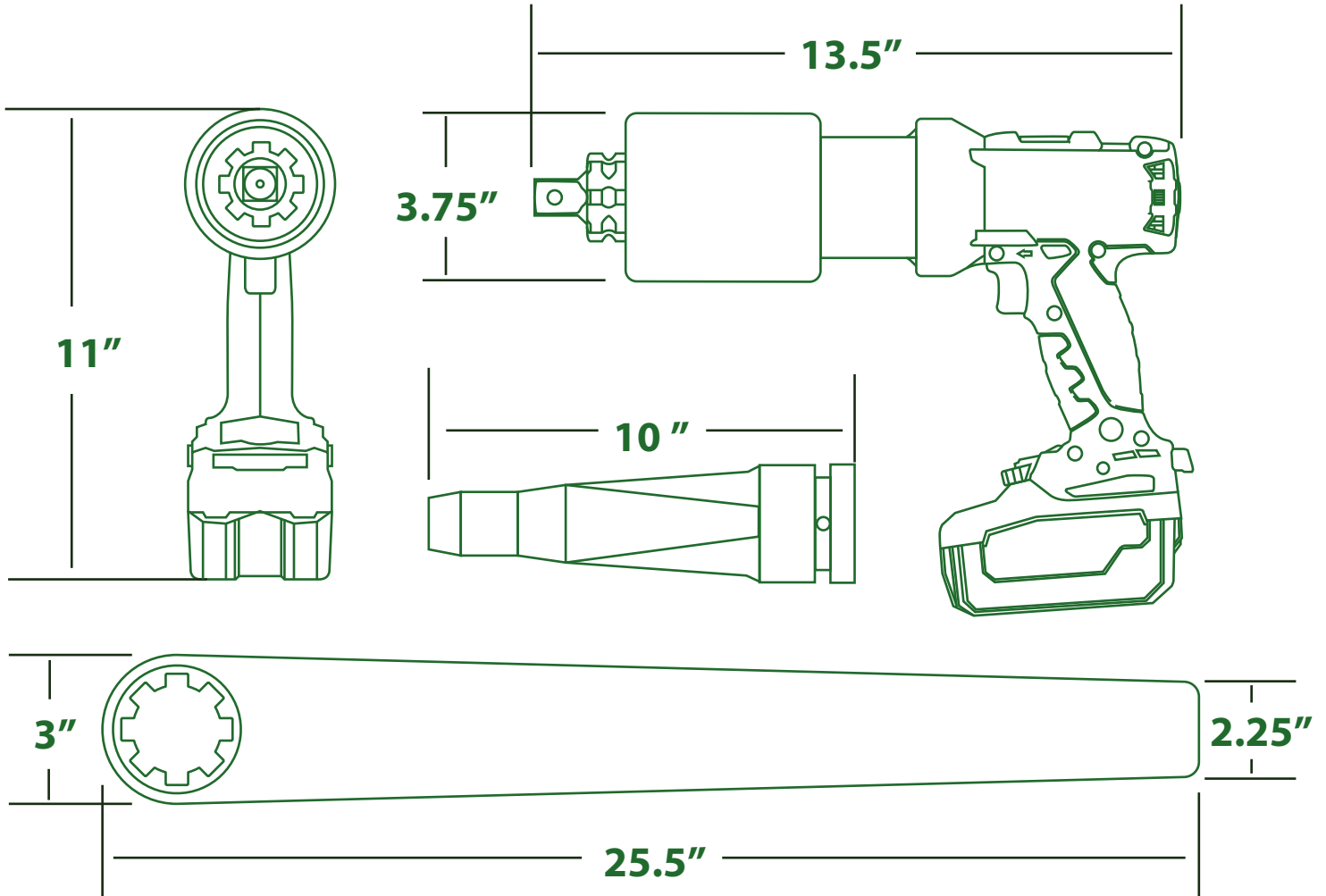
**WORKMASTER**  
WE FIND A WAY — OR MAKE ONE!



ITEM	P/N	DESCRIPTION
1	33-B3001	Torque Tool
2	33-10030	Capstan Drive Fitting w/ Pin & O-ring
3	33-B3008	Torque Reaction Arm
4*	32-50004	O-Ring Retainer
5*	32-50123	Retaining Pin
6	33-B3002	Li Ion Battery (Qty 2)
7	33-B3005	Shoulder Bolt
8	33-B3003	Battery Charger
9	33-B3006	Hex Key
10	32-90022	Utility Bag

\*Included w/ 33-10030

## GO-B3 Dimensions



# HOPPER CAR GATE OPENERS

**WORKMASTER**  
WE FIND A WAY — OR MAKE ONE!



## GO-A8-PW

The WORKMASTER® GO-A8-PW is an air-powered Railcar Gate Opener on a wheeled-cart with pneumatic controlled pivot wheels and manual height adjustment.



## GO-A13-HA

The WORKMASTER® GO-A13-HA is an air-powered Railcar Gate Opener on a wheeled-cart with pneumatic control of both its pivot wheels and height adjustment.



## GO-A8-FW

The WORKMASTER® GO-A8-FW is an air-powered Railcar Gate Opener on a wheeled-cart with manual height adjustment.



## GO-A3-PW

The WORKMASTER® GO-A3-PW is an air-powered Railcar Gate Opener on a wheeled cart with manual control of both its pivot wheels and height adjustment. It does generate torque reaction and needs to be stabilized.



## GO-E2

The WORKMASTER® GO-E2 is an electric powered Railcar Opener with rolling carriage (for mounting to a secured-to-ground W6 x 20 trackside beam), utilizing pendant controlled, instant forward / reverse action, and manual adjustment of a telescoping drive shaft and angles 50° vertical or horizontal.



## GO-A2

The WORKMASTER® GO-A2 is an air-powered, hand-portable, compact Railcar Opener with hand-held controls for rapid Forward-Reverse action.



## GO-M3

The WORKMASTER® GO-M3 is a manual-powered, hand-portable, compact Railcar Opener that rests on the ground while engaged in a railcar capstan. The GO-M3, a heavy-duty torque multiplier.



## GO-M04

The WORKMASTER® GO-M04 is a compact, portable and economical, manual ratchet wrench style railcar opener that is best used when budget is limited or railcar unloading is infrequent.



## CAPSTAN REPAIR

Opening slide gates with a completely worn Capstan Barrel is a problem. When the Barrel is rounded-off, it resists any effort to get a grip with a Drive Fitting. We have 2 solutions to the problem.

# WORKMASTER®

## WE FIND A WAY — OR MAKE ONE!

**WORKMASTER®** is a manufacturer of labor savings bulk material handling tools to help safely and efficiently unload, transport, store and process bulk solids from hopper bottom railcars, bulk trailers, bins, silos and chutes. To help Customers gain maximum benefit from our bulk materials handling tools and equipment, we also supply a complete line of operating, mounting, and maintenance products and accessories, such as Timers and Motor Controls, Vibrator Mounts, and Lubricating Oils to help keep your unloading site tools running longer and more efficiently. WORKMASTER products help Customers work more safely and efficiently, increase the lifespan of production-critical equipment, and decrease operating and maintenance costs of tools and equipment used in some of Industry's most dangerous, difficult, and dirty jobs.



Master Distributor

**AIRMA TIC**  
WE'LL HANDLE IT.

[airmatic.com](http://airmatic.com)

Ph: 267.350.2809

Em: [info@workmaster.net](mailto:info@workmaster.net)