

# WORKMASTER<sup>®</sup>

WE FIND A WAY — OR MAKE ONE!



## CAPSTAN REPAIR RENEW ATTACHMENT & SWAGE KIT

Address:

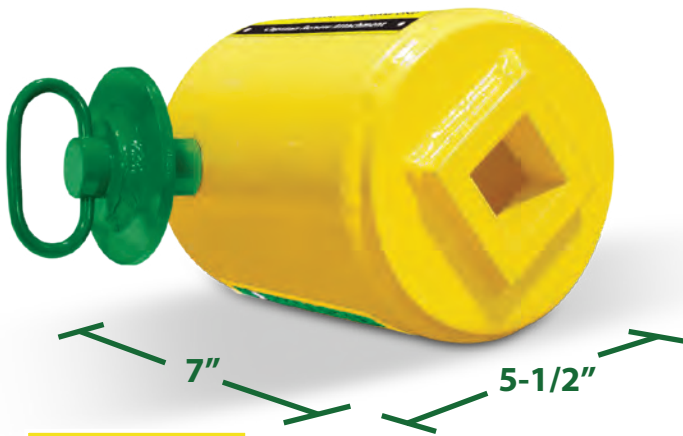
284 Three Tun Rd.  
Malvern, PA 19355

Phone:

267.350.2809

Email:

[info@workmaster.net](mailto:info@workmaster.net)



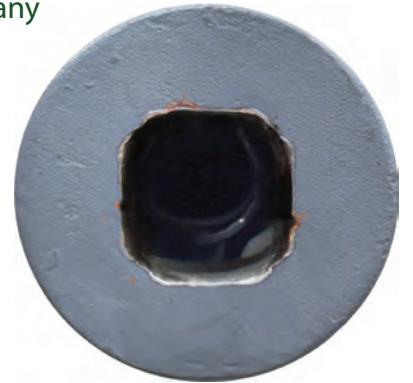
**PART #**

**80-10728**

### *A Perfect Fit, Every Time!*

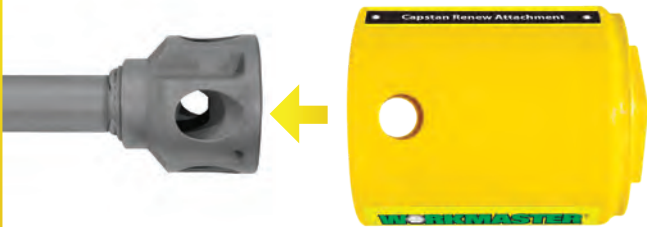
Opening hopper car slide gates with a completely worn Capstan Barrel can be a problem. When the Barrel's female square is rounded-off, it resists any effort to get a grip with a Gate Opener Drive Fitting. Busy unloading sites have no time to change-out the Barrel or, even worse, shunt the hopper car to a siding for repair.

**WORKMASTER** has a solution for the problem – the **Capstan Renew Attachment**.



The Attachment, with a top plate of HT 4140 Steel, is an easy-to-use adapter that slips over the Barrel and then pin-locks in place to provide a perfectly formed HD female square socket for the Gate Opener's Drive Fitting. The Attachment weighs < 15 lbs. so it can be easily and rapidly moved from gate to gate, and its lock-in-place feature ensures the capstan stability needed to accept the Opener's power output.

### Just Slip Attachment Over the Barrel...



### ...Lock in Place with the Pin-Lock...



**Fully Engage the Drive Fitting into the Attachment,  
AND OPEN THE GATE!**



# CAPSTAN SWAGE KIT

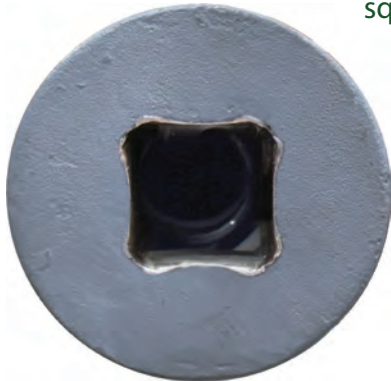
**WORKMASTER**  
WE FIND A WAY — OR MAKE ONE!

## Bring New Life to Worn Capstans!

For Hopper Car Capstan Barrels that are worn but salvageable, we also offer a **Capstan Swage Kit**. This enables a user to

square-up a worn female socket with just a few hits of a hand-held, 4140-steel Swage Tool with our no rebound Dead-blow Hammer.

Regular use of the Swage Kit reduces wear on the Opener's Drive Fitting.

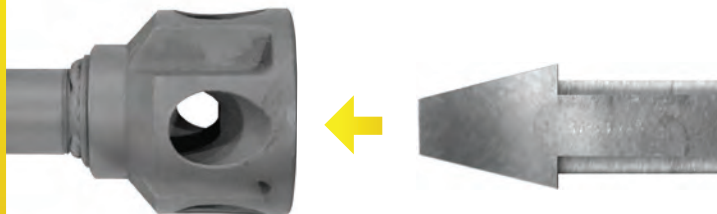


**PART #**  
**33-11120**

**STUDIES SHOW** that when the Gate Opener's Drive Fitting is fully engaged in the Railcar's Capstan Socket or the Capstan Renew Attachment, the **LIFE of the DRIVE FITTING WILL TRIPLE (3x)**.

**...Strike with the Dead-Blow Hammer...**

**Just Place Swage Tool in the Barrel...**



**Fully Engage the Drive Fitting into the Capstan,  
AND OPEN THE GATE!**



# WORKMASTER®

WE FIND A WAY — OR MAKE ONE!

**WORKMASTER®** is a manufacturer of labor savings bulk material handling tools to help safely and efficiently unload, transport, store and process bulk solids from hopper bottom railcars, bulk trailers, bins, silos and chutes. To help Customers gain maximum benefit from our bulk materials handling tools and equipment, we also supply a complete line of operating, mounting, and maintenance products and accessories, such as Timers and Motor Controls, Vibrator Mounts, and Lubricating Oils to help keep your unloading site tools running longer and more efficiently. WORKMASTER products help Customers work more safely and efficiently, increase the lifespan of production-critical equipment, and decrease operating and maintenance costs of tools and equipment used in some of Industry's most dangerous, difficult, and dirty jobs.



Address: 284 Three Tun Rd.  
Malvern, PA 19355  
Phone: 267.350.2809  
Email: [info@workmaster.net](mailto:info@workmaster.net)