

WORKMASTER[®]

WE FIND A WAY — OR MAKE ONE!



GATE OPENERS & ACCESSORIES

Master Distributor

AIRMA TIC
WE'LL HANDLE IT.

airmatic.com

Ph: 215.333.5600

Em: infocenter@airmatic.com

INDUSTRY'S MOST **DANGEROUS, DIFFICULT, DIRTY** JOBS MADE **SAFER, EASIER, & FASTER**

WORKMASTER® has the Hopper Car Gate Opener you need to eliminate the safety and productivity problems associated with the dangerous, dirty, and slow job of unloading hopper bottom railcars. We offer the industry's most complete line of Gate Openers for hopper car railcars. Based on factors such as number of cars unloaded, and unloading site conditions including available utilities (compressed air pressure and volume, 3-phase power, etc), site security, and budget, a Customer can choose from our wheeled-cart, beam-mounted, and hand portable Gate Openers which are available in pneumatic, electric, or manual power.

WORKMASTER® Hopper Car Gate Openers (our GO Line) allow a single operator to open or close hopper car slide gates in a fraction of the time required with makeshift tools. With the right Hopper Car Gate Opener, even solidly jammed railcar gates, the kind that put several workers into overtime or cause railcars to be shunted to alternate tracks, are easily, safely and quickly opened. The torque output of **WORKMASTER®** Gate Openers vary from 400 lb-ft to a whopping 13,000 lb-ft and operate at speeds from 8-RPM to 1,400-RPM for easy, fast, and safe opening of any railcar traveling gate. With productivity gains like these, it's no wonder every company that has ever tried a **WORKMASTER®** Hopper Car Gate Opener has purchased one!



WORKMASTER® Hopper Car Gate Openers (GOs) are engineered and manufactured to provide dependable, long-term service. Construction materials are chosen for their strength and durability. All Gate Openers are made from either high-quality low carbon steel or high-tensile aluminum alloys. Drive fittings and extensions are made from 4140 tool steel. Steel components are laser cut, and welded by AWS certified welders to meet AWS and ANSI Standards. Finishing operations include precision machining, Grade-8 fastened joints, and protective coatings such as powder coat, plating, black oxidizing, or acrylic enamel paint.

As you'll see, every one of our Hopper Car Gate Openers can make the job safer and easier. So how do you decide which model is best for your unloading site? Is it the fastest and most powerful (and also the most expensive) or is it the more manual (and also the least expensive) model, or is it something in-between? Your decision should be based on criteria such as: **(1)** the Condition and consistency of the railcars you process (old and poorly maintained railcars mean more GO power is needed, and varying-height capstans mean more height adjustability); **(2)** the Quantity of railcars you process on a daily, weekly, or monthly basis (more gates mean more GO speed is needed); **(3)** the Condition and location of unloading site (remote sites, or sites with uneven terrain can mean more GO automation, while tight quarters could mean choosing a smaller GO with manual operation); **(4)** the Budget (GOs range in price from \$1,000 to \$18,000 — but don't let price be the primary determinant, our financing and leasing programs can usually solve the "budget problem"). Finally, if you'd like our help in selecting the best GO for your site, give us a call. With over 8,000 GOs in use, we're sure our over 70-years of experience will help you select the Gate Opener that best meets your needs.

GO-A8-PW

HOPPER CAR GATE OPENER

WORKMASTER
WE FIND A WAY — OR MAKE ONE!



The **GO-A8-PW**, the flagship of our line, is an air-powered Gate Opener on a wheeled-cart with pneumatically controlled pivot wheels (follow traveling gate or moving train), and manual height adjustment (accommodate varied-height capstans). The GO-A8-PW is the wise choice for worksites which experience:

- Railcars with gates that vary from easy-to-open to extremely difficult found on cars not well-maintained or regularly repaired;
- Railcars with either fixed position or traveling gate mechanisms;
- Rough or uneven trackside terrain making Opener maneuverability an issue;
- Railcars with varied-height capstans/gate mechanisms;
- Railcars in long train units which require rapid opening/closing during continuous movement unloading.

THE GO-A8-PW

FEATURES A CONTROLLABLE SPEED OF 100- TO 1,400-RPM, AND A NO-TORQUE REACTION, SELF-REGULATING POWER OUTPUT OF 1,000 TO 13,000 LB-FT TO OPEN ANY GATE IN < 8 SECONDS!

CAPSTAN DRIVE FITTING

Precision machined, 4140 tool steel, 1-piece construction with 1-1/2" sq socket using pin & ring retainer, opens hundreds of gates.

AIR-POWERED PIVOT WHEELS

2-position toggle switch allows oversized, flat-free, solid tires to manually pivot 90° to follow capstan movement on traveling gates.

1" FILTER / REGULATOR w/ GAUGE / LUBRICATOR w/ OIL

Reduce maintenance while guaranteeing critical wear components receive clean air, controlled PSI air pressure and regular lubrication in the correct amount; Shipped with 1-qt TOOL LUBE™ Air Tool Oil specifically formulated for lubricating impacts and other heavy-duty air tools.

OIL CADDY & TOOL STORAGE UNIT

Opener shipped with 1-qt TOOL LUBE™ Air Motor Oil to make lubrication fast and easy. Tool Storage Container holds available drive extensions.

ERGONOMIC CONTROLS

Ergonomically positioned, self-closing, speed control throttle; Positive on/off pivot wheel switch; Forward/Reverse air motor lever arm.



The **GO-A3-PW**, an air-powered, wheeled-cart Gate Opener, allows control of its pivot wheels (follow traveling gate), and height adjustment (accommodate varied capstans). The GO-A3-PW is well suited for work-sites that experience:

- Railcars that vary from easy-to-open to moderately difficult because they are well-maintained and regularly repaired;
- Railcars with either fixed position or traveling gate mechanisms;
- Track side surface is level, smooth, and unobstructed (for traveling gate mechanisms);
- Railcars with varied-capstan/gate mechanisms.

THE **GO-A3-PW**

THE GO-A3-PW GENERATES A CONSTANT SPEED OF 8.5-RPM, AND A POWER OUTPUT OF 2,700 LB-FT.

SELF-CONTAINED, SLIDE-A-WAY OUTRIGGERS

Simply and safely counterbalances the torque reaction that occurs when opening or closing gates; improves maneuverability.

PIVOT WHEELS

Push/Pull valve allows pneumatic tires to manually pivot 90° to follow capstan movement on traveling gates.

CAPSTAN DRIVE FITTING

Heavy-Duty, bolt-on, 1-piece construction to guarantee long service life.

ADJUSTABLE HEIGHT HANDLE

Easily adjusts to the correct height and angle for operator preference and safe usage.

GO-A13-HA

HOPPER CAR GATE OPENER

WORKMASTER
WE FIND A WAY — OR MAKE ONE!



The **GO-A13-HA** is an air-powered Gate Opener on a wheeled-cart with pneumatic control of both its pivot wheels (follow traveling gate or moving train), and height adjustment (accommodate varied height capstans). The GO-A13-HA is the wise choice for work sites which experience:

- Railcars with gates that vary from easy-to-open to extremely difficult that are found on cars not well maintained or regularly repaired;
- Railcars with either fixed position or traveling gate mechanisms;
- Rough or uneven trackside terrain making Opener maneuverability an issue;
- Railcars with varied-height capstan / gate mechanisms;
- Railcars in long train units require rapid opening /closing during continuous movement.

THE GO-A13-HA

FEATURES A CONTROLLABLE SPEED OF 100- TO 1,400-RPM, AND A NO-TORQUE REACTION, SELF-REGULATING POWER OUTPUT OF 1,000 TO 13,000 LB-FT TO OPEN ANY GATE IN < 8 SECONDS!

CAPSTAN DRIVE FITTING

Precision machined, 4140 tool steel, 1-piece construction with 1-1/2" sq socket using pin & ring retainer, opens hundreds of gates.

OIL CADDY & TOOL STORAGE UNIT

Opener shipped with 1-qt TOOL LUBE™ Air Motor Oil to make lubrication fast and easy. Tool Storage Container holds available drive extensions.

DUAL AIR CYLINDERS

Heavy-Duty, smooth-lift type to enable thousands of rapid, lever controlled, raise/lower height adjustment cycles with minimal maintenance.

1" FILTER / REGULATOR w/ GAUGE / LUBRICATOR w/ OIL

Reduce maintenance while guaranteeing critical wear components receive clean air, controlled PSI air pressure and regular lubrication in the correct amount; Shipped with 1-qt TOOL LUBE™ Air Tool Oil specifically formulated for lubricating impacts and other heavy-duty air tools.

ERGONOMIC CONTROLS

Ergonomically positioned, self-closing, speed control throttle; Positive on/off pivot wheel switch; Forward/Reverse air motor level arm.

AIR-POWERED PIVOT WHEELS

2-position toggle switch allows oversized, flat-free, solid tires to manually pivot 90° to follow capstan movement on traveling gates.



The **GO-A8-FW** is an air-powered Gate Opener on a wheeled-cart with fixed position wheels, and manual height adjustment (accommodate varied-height capstans). The GO-A8-FW is the wise choice for worksites which experience:

- Railcars with gates that vary from easy-to-open to extremely difficult found on cars not well-maintained or regularly repaired;
- Railcars with fixed position gate mechanisms;
- Rough or uneven trackside terrain making Opener maneuverability an issue;
- Railcars with varied-height capstans / gate mechanisms;
- Busy unloading sites which require rapid opening/closing of railcar gates.

THE **GO-A8-FW**

FEATURES A CONTROLLABLE SPEED OF 100- TO 1,400-RPM, AND A NO-TORQUE REACTION, SELF-REGULATING POWER OUTPUT OF 1,000 TO 13,000 LB-FT TO OPEN ANY GATE IN < 8 SECONDS!

ERGONOMIC CONTROLS

Ergonomically positioned, self-closing, speed control throttle; Positive on/off pivot wheel switch; Forward/Reverse air motor level arm.

1" FILTER / REGULATOR w/ GAUGE / LUBRICATOR w/ OIL

Reduce maintenance while guaranteeing critical wear components receive clean air, controlled PSI air pressure and regular lubrication in the correct amount; Shipped with 1-qt TOOL LUBE™ Air Tool Oil specifically formulated for lubricating impacts and other heavy-duty air tools.

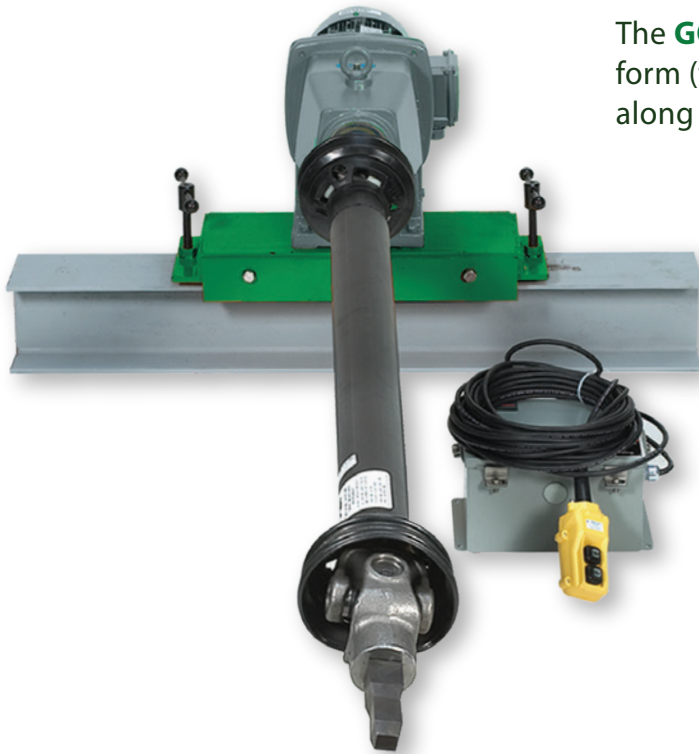
CAPSTAN DRIVE FITTING

Precision machined, 4140 tool steel, 1-piece construction with 1-1/2" sq socket using pin & ring retainer, opens hundreds of gates.

GO-E2

HOPPER CAR GATE OPENER

WORKMASTER
WE FIND A WAY — OR MAKE ONE!



The **GO-E2** is an electric-powered Gate Opener with a rotating platform (for a full 360° swivel) on a rolling carriage (to mount and slide along a secured-to-ground W-beam), utilizing pendant-controlled, instant Forward-Reverse action, and a telescoping drive shaft with both vertical and horizontal adjustment (to follow traveling gate and accommodate varied-height capstans). The GO-E2 is well suited for worksites that experience:

- Railcars that vary from easy-to-open to moderately difficult because they are well maintained and regularly repaired;
- Railcars with either fixed position or traveling gate mechanisms;
- Limited or no compressed air supply;
- Railcars with varied height capstan/gate mechanisms;
- Rough or uneven trackside terrain making Opener maneuverability an issue.

THE GO-E2

THE GO-E2 USES A 5-HP MOTOR TO GENERATE A CONSTANT SPEED OF 34-RPM AND A POWER OUTPUT OF 2,000 LB-FT DURING SURGE AND 875 LB-FT DURING OPERATION.

ROTATING PLATFORM ON ROLLING CARRIAGE

180° pivot enables opening hopper car gates on parallel tracks, and a 90° pivot enables safe, out-of-the-way drive shaft protection when not in use. The Rolling Carriage locates and locks-down the Opener directly opposite every gate, anywhere along the unloading site.

TELESCOPING DRIVESHAFT

Telescopes 40" to 82" (longer lengths available) and angles 50° vertical and horizontal to accommodate both traveling gate mechanisms and varied-height gates.

PENDANT CONTROL MOTOR STARTER

Pushbutton control up to 20' from railcar gate enables instantaneous forward/reverse jog of gear motor to rock open even stubborn gates.

CAPSTAN DRIVE FITTING

Precision-machined, 4140 tool steel, 1-piece step-tapered drive tip 1-1/4" x 1-1/2" sq shank using HD set-screw retainer will last through hundreds of gate openings.



The **GO-B3** is a battery-powered, torque-controlled, portable Gate Opener that produces up to 3000 ft-lbs of torque to open hopper car gates that are easy to moderately-difficult to open. Although, at 29.5 lbs the opener is compact and lightweight, because it is a torque wrench, it does require the use of an easy to attach torque reaction arm for safety. The GO-B3 is supplied with two (2) long lasting HD Lithium-Ion batteries which, if properly maintained, will open hundreds of hopper cars for years.

- Unloading sites that receive occasional to light hopper car traffic;
- Railcars that vary from easy-to-open to moderately difficult;
- Neither compressed air or electric power is available or is limited;
- Majority of railcars have fixed position gate mechanisms;
- Trackside surface is level, smooth, and unobstructed;
- Narrow decks or platforms preclude wheeled-cart or beam-mounted Opener;
- Site security requires portable, easy to remove and store tools and equipment.

THE GO-B3

THE GO-B3 GENERATES AN OPERATOR PACED MAXIMUM POWER OUTPUT OF 3,000 LB-FT.

SMOOTH, CONTINUOUS FORCE

Facilitates steady, controlled gate opening without concern for wear of gate mechanism.

BATTERY POWERED

Operates at sites where air or electric power is not available.

LIGHTWEIGHT PORTABILITY

Enables one worker to easily carry and position this 29.5 lb powerhouse and thereby improve safety, increase productivity, and reduce manpower

STURDY CARRYING BAG

Allows convenient storage of all components, and easy transport to/from the unloading site.

QUICK CHARGE BATTERY

Lithium-Ion HD Battery fully charges in under 60 minutes

GO-M3

HOPPER CAR GATE OPENER

WORKMASTER
WE FIND A WAY — OR MAKE ONE!

The **GO-M3** is a manual-powered, hand-portable, compact Gate Opener that rests on the ground when being used. The GO-M3, a heavy-duty torque multiplier, uses planetary gear action to enable an operator to simply turn a ratchet wrench to open gates. The GO-M3 is well suited for worksites that experience:



- Railcars that vary from easy-to-open to moderately difficult because they are well maintained and regularly repaired;
- Compressed air or other power is not available or limited;
- Majority of railcars have fixed position gate mechanisms;
- Trackside surface is level, smooth, and unobstructed;
- Narrow decks or platforms that preclude wheeled-cart or beam-mounted Opener;
- Site security requires portable, easy removal and storage of tools and equipment.

THE GO-M3

THE GO-M3 GENERATES AN OPERATOR PACED-POWER OUTPUT OF 3,200 LB-FT WITH ONLY 173 LB-FT OF INPUT POWER.

VERSATILE POWER INPUT

Allows the GO-M3 to accept either a manual ratchet wrench drive input tool or an air powered ratchet wrench drive input tool.

BUILT-IN ANTI-BACKLASH TORQUE HOLDING DEVICE

Enables the GO-M3 to maintain input torque when using a manual crank handle or air-powered ratchet wrench drive tool.

CONTROLLED-SHEAR, EASY-TO-REPLACE OUTPUT SQUARE DRIVE

Protects against overloading the GO-M3 power train by shearing at 3-10% over the 3,200 lb-ft rated capacity.

LOW INPUT TORQUE

Enables one worker to safely and easily generate the job-required torque with the GO-M3 kit's 1/2" drive ratchet wrench.

CAPSTAN DRIVE FITTING

Precision-machined, 4140 tool steel, 1-piece construction with 1" sq socket using 1-piece Ret-Ring Retainer opens hundreds of gates.



The **GO-M04** is a manual-powered, hand-portable, compact Gate Opener that utilizes a 1-1/2" sq dr, extreme-duty, ratchet wrench to enable an operator to generate a no torque-reaction power output of 400 lb-ft with its standard 30" handle. The GO-M04's ratchet mechanism can accept up to 5,000 lb-ft of input torque so the handle can be lengthened using a heavy walled 2" ID pipe to increase the GO-M04's "breaker bar" power. Because the GO-M04 uses a 4-sided, tapered drive fitting to turn the capstan, the dangerous slippage problem that occurs using a pry bar is eliminated. The GO-M04 is the ideal Gate Opener when budget is limited and railcar unloading is infrequent.

THE GO-M04

THE GO-M04 GENERATES AN OPERATOR-PACED POWER OUTPUT OF 400 LB-FT WHICH CAN BE INCREASED 10X WITH AN HD PIPE EXTENSION.

HEAVY-DUTY RATCHET

Heavy-Duty Ratchet capable of producing up to 5,000 lb-ft.

LIGHTWEIGHT PORTABILITY

Weighs only 23 lbs.

CAPSTAN DRIVE FITTING

Precision-machined, 4140 tool steel, 1-piece construction with 1-1/2" sq socket using pin & ring retainer, opens hundreds of gates!

SIMPLE DESIGN

Simple Forward/Reverse Lever Switch.

LOW INPUT TORQUE

30" Tapered handle allows easy mounting of extension handle for greater torque output.

GO-A2

HOPPER CAR GATE OPENER

WORKMASTER
WE FIND A WAY — OR MAKE ONE!



The **GO-A2** is an air-powered, hand-portable, compact Gate Opener with hand-held controls for rapid Forward-Reverse action. The GO-A2 can utilize its capstan drive fitting, or fit over the barrel of a worn capstan and utilize the capstan's socket notches. The GO-A2 is well suited for worksites that experience:

- Railcars that vary from easy-to-open to moderately difficult because they are well maintained and regularly repaired;
- Majority of railcars that have fixed position gate mechanisms;
- Track side surface is level, smooth, and unobstructed (for cars with traveling gate mechanisms);
- Narrow deck or platform precludes wheeled-cart or beam-mounted openers;
- Site security requires portable, easy removal and storage of tools and equipment.

THE GO-A2

THE GO-A2 GENERATES A CONSTANT SPEED OF 8-RPM, AND A POWER OUTPUT OF 2,000 LB-FT.

HAND-HELD CONTROL VALVE

Enables operator to easily and safely open or close gate from up to 6' away.

LIGHTWEIGHT PORTABILITY.

Enables one worker to easily carry and position this 45-lb powerhouse.

HIGH-TENSILE ALUMINUM CAST HOUSING

Withstands the rugged use and operating conditions at unloading sites.

HEAVY-DUTY DRIVE FITTING

Accommodates railcar capstans without external dog slots.

				
	GO-A8-PW	GO-A3-PW	GO-A13-HA	GO-A8-FW
POWER	Pneumatic; 148 CFM @ 85 PSI (free); 114 CFM @ 85 PSI (impacting)	Pneumatic; 70 CFM @ 90-120 PSI	Pneumatic; 148 CFM @ 85 PSI (free); 114 CFM @ 85 PSI (impacting)	Pneumatic; 148 CFM @ 85 PSI (free); 114 CFM @ 85 PSI (impacting)
WORKING TORQUE	1,000 - 13,000 lb-ft; recoilless, self-regulating @1400-RPM	2,700 lb-ft constant @ 8.5-RPM	1,000 to 13,000 lb-ft; recoilless, self-regulating @1400-RPM	1,000 to 13,000 lb-ft; recoilless, self-regulating @1400-RPM
WHEEL ASSEMBLY	16" Dia with 4.80/4.00 - 8" Flat-Free, Solid Polyurethane Tires Ribbed Tread	10.5" Dia with 4.10/ 3.50 - 4" Pneumatic Tubeless Tires, Sawtooth Tread	16" Dia with 4.80/4.00 - 8" Flat-Free, Solid Polyurethane Tires, Ribbed Tread	16" Dia with 4.80/4.00 - 8" Flat-Free, Solid Polyurethane Tires, Ribbed Tread
FRAME DIMENSIONS	41"L x 42"W x 42"H	36"D x 36"W x 46" H	40"D x 42"W x 44"H	50"L x 30"W x 42"H
HANDLE WIDTH	28"W; Fitted with Handle Grips	36"W; Fitted with Handle Grips	29"; Fitted with Handle Grips	28"W; Fitted with Handle Grips
HEIGHT ADJUSTMENT	Height Adjustable Forks: 10.5", 12.5", 14.5" Ground to Capstan	Height Adjustable: 7.5" to 19.75" Ground to Capstan	Pneumatic Height Adjustment: 10" to 24" Ground to Capstan	Height Adjustable Forks: 10.5", 12.5", 14.5" Ground to Capstan
INLET COUPLING	Universal Coupling (Chicago Type) w/ Safety Lock Pin	Universal Coupling (Chicago Type) w/ Safety Lock Pin	Universal Coupling (Chicago Type) w/ Safety Lock Pin	Universal Coupling (Chicago Type) w/ Safety Lock Pin
TOOL CONTAINER	5"L x 12"W x 6"D	----	5"L x 12"W x 6"D	----
LUBRICATOR CAPACITY	16 oz Adjustable Flow	4.5 oz	16 oz	16 oz
FINISH COATING	Baked-On Powder Coat	Acrylic Enamel Coat Finish	Baked-On Powder Coat	Baked-On Powder Coat
INCLUDED	(1) 1" FRL Assembly; (1) Drive Fitting w/ Pin & Ring Retainer; (1) Qt TOOL LUBE™ Air Tool Oil; (1) Operating Video; (1) Manual	(1) 1" FRL Assembly; w/ Gauge, Lubricator Trio-Control; (1) Drive Fitting; (1) Qt TOOL LUBE™ Air Tool Oil; (1) Manual	(1) 1" FRL Assembly; (1) Drive Fitting w/ Pin & Ring Retainer; (1) Qt TOOL LUBE™ Air Tool Oil; (1) Operating Video; (1) Manual	(1) 1/2" FRL Assembly; (1) Drive Fitting w/ Pin & Ring Retainer; (1) Qt TOOL LUBE™ Air Tool Oil; (1) Operating Video; (1) Manual
GATE OPENER WEIGHT	306 lbs	285 lbs	361 lbs	246 lbs
SHIPPING WEIGHT	530 lbs	465 lbs	520 lbs	405 lbs

GATE OPENERS & ACCESSORIES

WORKMASTER
WE FIND A WAY — OR MAKE ONE!

				
GO-B3	GO-E2	GO-M3	GO-M04	GO-A2
HD Li-Ion Battery	Electric; 230 / 460 VAC / 60 Hz	Manual; Input Torque	Manual; Ratchet Wrench	Pneumatic; 70 CFM @ 90-120 PSI
3,000 lb-ft @ 2-RPM used w/ Reaction Bar	2,000 lb-ft @ 34-RPM	3,200 lb-ft output @ 173 lb-ft input used w/ Reaction Bar	400 lb-ft w/30" Lever; Torque can be increased w/ Reaction Bar	2,000 lb-ft constant @ 8.0-RPM
----	----	----	----	----
3"W x 22.5"L x 25.5"H (w/ Drive Fitting & Reaction Arm)	Motor: 24"W x 26"L x 13"H; TDS*: 48" compressed to 80.5" extended	14"L x 19.6"H (w/ Drive Fitting & Reaction Bar)	30"L x 3.75"W x 1.38"D	22"L x 11.5"W x 19"H (w/Drive Fitting)
----	----	----	----	Cast-In D-Handle, 5"W x 1"H
Lift-on portability to accommodate any Capstan height	TDS* L 50° V and H to accommodate varied-height gates.	Lift-on portability to accommodate any Capstan height	Lift-on portability to accommodate any Capstan height	Lift-on portability to accommodate any Capstan height
----	----	----	----	Swivel Fitting, 3/8" NPT
----	----	----	----	----
----	----	----	----	----
Black Oxide	Acrylic Enamel Coat	Acrylic Enamel Coat Finish	Black Oxide	Acrylic Enamel Coat Finish
(1) Drive Fitting w/ Pin & Ring Retainer; (1) Torque Reaction Arm w/ shoulder bolt (1) 1/8" Hex Key; (2) Batteries; (1) Battery Charger; (1) HD Carrying Bag; (1) Manual	(1) Drive Fitting; (1) Manual	(1) Drive Fitting w/ Pin & Ring Retainer; (1) Ratchet Wrench (1/2" Sq Dr); (1) 1" Sq Dr Spare Anvil; (1) 3/32" Allen Wrench; (1) HD Carrying Bag; (1) Manual	(1) Drive Fitting w/ Pin & Ring Retainer; (1) HD Carrying Case; (1) Manual	(1) Drive Fitting; (1) Manual
29.5 lbs	Motor: 150 lbs; TDS*: 68 lbs;	18.3 lbs	21 lbs	65 lbs
40 lbs	290 lbs	34 lbs	34 lbs	80 lbs

*TDS = Telescoping Drive Shaft



DRIVE FITTINGS

If you're serious about opening and unloading railcars, your Gate Opener — regardless of make or model — needs a serious **DRIVE FITTING**. WORKMASTER®'s tapered, 1-piece Drive Fitting is designed to fit every railcar capstan with full contact on all sides. Its 1-1/2" Female Sq Socket allows this Drive Fitting to be used with a variety of Gate Openers. With a forged core and precision machined sides, tapered from a 1" square to a 1-1/4" square tip, WORKMASTER®'s 1-piece Drive Fitting will become your Gate Opener's best friend!

PART #	GATE OPENER MODEL
33-01410	GO-A8-PW, A13-HA, A8-FW, & M04
33-01210	GO-B3 & M3
33-10001	GO-E2

DRIVE FITTING EXTENSIONS



Unmovable obstacles and/or unloading site gaps can make getting your Gate Opener close to the railcar's capstan nearly impossible! WORKMASTER®'s heavy-duty, 12" and 20" **DRIVE FITTING EXTENSIONS** make the impossible — possible. Each Extension is designed to not only extend your Gate Opener's reach, but to do so with minimal torque loss. Their precision-machined, impact resistant, hardened steel construction makes them the ideal Gate Opener accessory. Drive Extensions in 12" and 20" let you adapt to virtually any railcar. All sizes feature easy-on/easy-off O-Ring Pin Retainer design.

PART #	DESC.
33-10012	Anvil Extension – 12" L, 1-1/2" Sq-F x 1-1/2" Sq-M; w/(1) Retaining Pin & O-Ring
33-10020	Anvil Extension – 20" L, 1-1/2" Sq-F x 1-1/2" Sq-M; w/(1) Retaining Pin & O-Ring



UNIVERSAL JOINT

Covered Hopper Cars come in a variety of shapes and sizes, and the height of a capstan and the surrounding terrain can vary just as much. WORKMASTER®'s Heavy-Duty **UNIVERSAL JOINT** can help overcome these height variances by positioning your Drive Fitting directly in-line with the center of the gate's capstan. Correct alignment with the capstan is critical to the longevity of your Gate Opener, and will ensure the solid in-line entry of the Drive Fitting on even the steepest of railroad slopes.

- Universal Joint; 1-1/2" Sq-F X 1-1/2" Sq-M; w/(1) Retaining Pin & O-ring

PART #

33-10090



CAPSTAN REPAIR

CAPSTAN RENEW ATTACHMENT

Opening hopper car slide gates with a completely worn Capstan Barrel can be a problem. When the Barrel's female square is rounded-off, it resists any effort to get a grip with a Gate Opener Drive Fitting. Busy unloading sites have no time to change-out the Barrel or, even worse, shunt the hopper car to a siding for repair. WORKMASTER has a solution for the problem – the Capstan Renew Attachment.

PART #

80-10728



CAPSTAN SWAGE KIT

For Hopper Car Capstan Barrels that are worn but salvageable, we offer a Capstan Swage Kit. This Kit enables a user to square-up a worn female socket with just a few hits of a hand-held, 4140-steel Swage Tool with our no rebound Dead-blow Hammer. Regular use of the Swage Kit reduces wear on the Opener's Drive Fitting and improves Torque Transfer.

- Inc (1) #4140 Steel Swage Tool & (1) HD Dead-Blow Hammer

PART #

33-11120

AIR RECEIVER TANKS

Does your unloading site equipment suffer from insufficient air pressure (PSI) or air volume (CFM)? If you can't efficiently and effectively operate your Hopper Car Gate Opener, Railcar Vibrator or Hopper Car Connector, a new or larger air compressor doesn't have to be the answer. A WORKMASTER[®] **AIR RECEIVER TANK** is the cost-effective method to store and deliver the additional compressed air volume and air pressure your unloading site requires at a fraction of the cost of a compressor. All receiver Tanks are built in accordance with the ASME Section VIII Division I Code latest edition. Each Tank is supplied with an automatic drain valve, pressure gauge and safety relief valve, making WORKMASTER[®] Air Receiver Tanks the cost effective solution to any unloading site air system problem.

HORIZONTAL AIR RECEIVER TANKS & ACCESSORY KITS

SIZE (GAL)	DIMENSIONS (L x W X H)	TANK PART #	ACCESSORY KIT PART #
30	38" x 16" x 18"	31-32202	31-32601
60	48" x 20" x 22"	31-32203	31-32601
80	63" x 20" x 22"	31-32204	31-32602
120	68" x 24" x 26"	31-32225	31-32603
240	84" x 30" x 33"	31-32227	31-32604

VERTICAL AIR RECEIVER TANKS & ACCESSORY KITS

SIZE (GAL)	DIMENSIONS (L x W X H)	TANK PART #	ACCESSORY KIT PART #
30	38" x 16" x 18"	31-32210	31-32601
60	48" x 20" x 22"	31-32211	31-32601
80	63" x 20" x 22"	31-32212	31-32602
120	68" x 24" x 26"	31-32213	31-32603
240	84" x 30" x 33"	31-32215	31-32604



Vertical Tanks



Horizontal Tanks



PROTECTIVE COVER

Rain, snow, and plant debris can really do a number on your Hopper Car Gate Opener. But with WORKMASTER®'s water-proof, puncture-resistant **PROTECTIVE COVER**, you can keep your Gate Opener working and looking like new. The Cover's tapered fit shelters your Gate Opener from the elements while maintaining the unit's mobility. Protect your Gate Opener from rust, dents, corrosion, and dirt with WORKMASTER®'s Protective Cover.

Available for GO-A8-PW, GP-A8-FW, GO-A3-PW, and GO-A13-HA Hopper Car Gate Openers.

PART #

30-20020



BALL VALVES

Ball Valves are an integral part of an unloading site's air system; unfortunately, they're often overlooked. When strategically placed, WORKMASTER®'s Brass Lockable **BALL VALVES** can give you greater, more convenient control over your Gate Opener and Vibrator's Air Supply. In addition to giving you instant shut-off capability, the correct Ball Valve can give your Vibrator the instant rush of air flow needed to begin vibration. In the closed position, each Valve vents downstream air in accordance with new OSHA Regulations for pneumatic systems. Female x Female Standard Port; Rated to 600-PSI WOG.

PART #

SIZE

81-10002

3/8"

81-10003

1/2"

PART #

SIZE

81-10004

3/4"

81-10005

1"

ELIMINIZER AIR FILTER/DRYER WITH STAND



Stop water and dirt from entering your Hopper Car Gate Opener or Railcar Vibrator with WORKMASTER's **ELIMINIZER POINT-OF-USE AIR DRYER**. This unique airline accessory incorporates patented inverse flow technology and is engineered specifically to remove condensed liquids and dirt from the air lines feeding your Railcar Gate Opener, Hopper Car Air Vibrator or Hopper Car Connector. This Air Filter/Dryer Assembly not only prevents airline dirt and moisture from damaging any pneumatic equipment but also prevents lubrication washout, thereby protecting against rust and excessive wear to internal parts.

- 1" NPT Inlet (flows up to 150-SCFM)
- Stainless Steel Element and Cotton
- ELIMINIZER Dryer/ Filter w/Stand
- Metal Bowl w/ DP Indicator
- Rugged Metal Bowl
- Automatic Drain Cartridge
- 1" NPT In/Out
- Auto float Drain; 150 Max

PART #

82-10424

FRL ASSEMBLY WITH CARRIER



If your Hopper Car Gate Opener is not designed with an In-Line Lubricator, WORKMASTER's **FRL ASSEMBLY** is ideal. The Assembly provides the utmost in tool protection by Filtering, Regulating, and Lubricating your Gate Opener's air supply. Weighing only 23-lbs, the FRL Assembly is housed in a rugged frame which can be easily transported to and from the unloading site. Continuous use of this FRL Assembly will keep any air-operated railcar Gate Opener or other pneumatic tools and equipment operating efficiently, will extend its life, and will conserve plant air.

- Universal Fittings
- 40-Micron Filter
- FRL Assembly w/Carrier
- 29 oz Metal Bowl
- 2" Dia Gauge; 0 -160 PSI
- 16-oz Metal Reservoir Bowl
- 1" In/Out Ports w/ Universal Couplings
- 40 uF Element; 250 Max SCFM

PART #

82-10330

IN-LINE LUBRICATOR



Designed for the intermittent start/stop operation of Hopper Car Gate Openers and Vibrators, and factory-set to deliver just the right amount of air tool oil, WORKMASTER®'s **IN-LINE LUBRICATOR** is the preferred way to supply the lubrication your air-powered equipment demands. Don't allow your Gate Opener or Vibrators to run dry, keep them well-oiled and long-running with WORKMASTER®'s In-Line Lubricator.

- 1" NPT Threaded Ports (Female)
- 16-oz Metal Reservoir Bowl

PART

82-40004

TOOL-LUBE™ AIR TOOL OIL



Keep your Gate Opener running longer — up to three times longer — cleaner, with less downtime and greater power by using WORKMASTER®'s **TOOL-LUBE AIR TOOL OIL**. Special emulsifiers allow this unique oil to absorb 10% of its weight in water preventing the formation of rust, gum, and sludge. With regular use of WORKMASTER®'s TOOL-LUBE, you can expect your pneumatic Gate Opener to operate with greater performance, consistency, and reduced noise levels.

PART

DESC.

36-21010

1 Qt

36-21014

1 Case (12 Qts)



VIBRA-LUBE™ VIBRATOR OIL

The internal parts of Pneumatic Rotary and Piston Type Vibrators are subject to severe stress. These parts require a special type of lubrication. WORKMASTER®'s **VIBRA-LUBE VIBRATOR OIL** is uniquely formulated to coat and protect a vibrator's inner lining and moving parts. With regular use, VIBRA-LUBE can add years of service to the life of your vibrator as well as reduce noise levels and increase air efficiency and power. For a pneumatic vibrator, there is no substitute.

PART #	DESC.
36-21020	1 Qt
36-21024	1 Case (12 Qts)

PIN & RING CONNECTOR

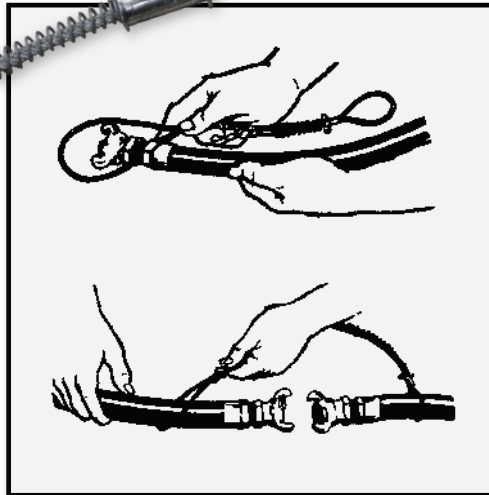
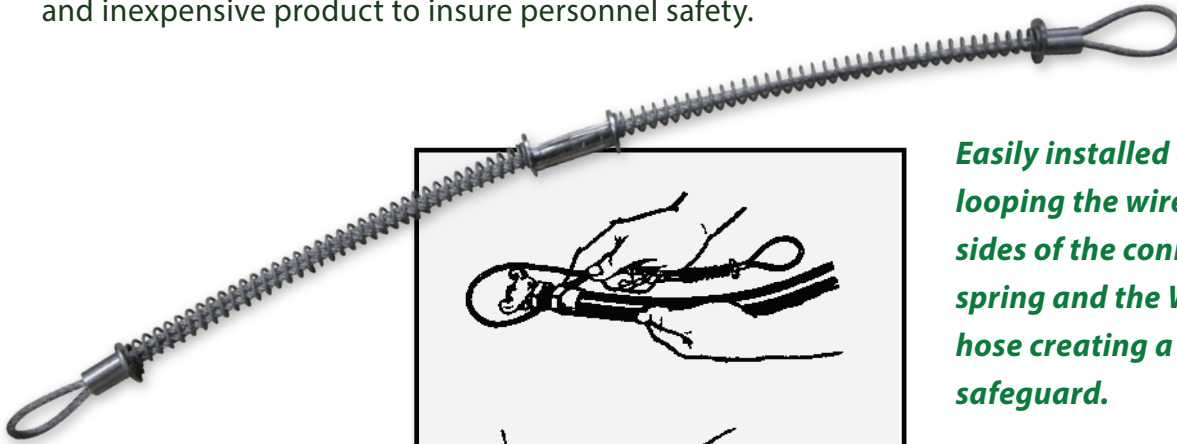
If your unloading site sees a variety of railcars and you're constantly changing the accessories on your Gate Opener, you'll need WORKMASTER®'s **PIN & RING CONNECTOR** to help keep the job moving. The Pin is hardened steel; the Ring is nick-resistant rubber, together they make changing from your 12" Extension to your Universal Joint, to your 20" Extension quick and easy. WORKMASTER®'s Pin & Ring Connectors are also OSHA-approved because there are no protruding ends that can damage property or injure workers.



PART #	DESC.
32-50124	PIN
32-50000	RING

WHIPCHECK SAFETY CABLE

WORKMASTER®'s **WHIPCHECK SAFETY CABLE** is a safe, positive, economical solution to the problem of injuries caused by broken air hose connections. Easily installed and removed without the use of tools, this simple device is also highly resistant to rust and corrosion. Since it is always attached to the hose, it cannot be lost, and proper installation can be easily verified — even at a distance. The WHIPCHECK is an effective and inexpensive product to insure personnel safety.



Easily installed by depressing spring and looping the wire over the hose on both sides of the connection. Release the spring and the Whipcheck locks onto the hose creating a permanent, dependable safeguard.

PART #

74-10010

Recommended by:

OSHA, BUREAU OF MINES,
BUREAU OF RECLAMATION
US ARMY CORPS OF ENGINEERS

RET-RING CONNECTOR



WORKMASTER®'s 1-1/2" **RET-RING CONNECTOR** secures your Drive Fitting to your Gate Opener, Extension, or Universal Joint. One-piece, molded of durable polyurethane, with a steel insert for added safety, the Ret-Ring Connector makes changing accessories quick and easy. Its bright blue color makes it easy to spot if dropped or misplaced and its enclosed design is OSHA approved for all Gate Opener and rotating tool applications.

PART #

32-50001

AIR HOSE ASSEMBLIES



Railcar Gate Openers and Pocket Vibrators are designed to create an efficient and safe work environment. WORKMASTER[®]'s 1/2", 3/4", and 1" Heavy-Duty **AIR HOSE ASSEMBLIES** come in a range of lengths to keep your Gate Openers and Vibrators operating safely and efficiently at any distance. Each assembly is made from 200-PSI, nick-resistant, red rubber hose complete with universal fittings at each end. Don't allow worn or collapsed, cut or damaged, ready-to-burst air hoses turn your unloading station into an accident waiting to happen. Replace worn and/or damaged hose lengths with WORKMASTER[®]'s Heavy-Duty Air Hose Assemblies.

BEST FOR	DIAMETER	LENGTH	PART #
Gate Openers	1"	10 ft	83-09078-09
		15 ft	83-09118-09
		25 ft	83-09134-09
		50 ft	83-09174-09
Vibrators	3/4"	10 ft	83-09077-09
		15 ft	83-09117-09
		25 ft	83-09133-09
		50 ft	83-09173-09
Vibrators	1/2"	10 ft	83-09076-09
		15 ft	83-09116-09
		25 ft	83-09132-09
		50 ft	83-09172-09

RAILCAR VIBRATORS & ACCESSORIES

WORKMASTER
WE FIND A WAY — OR MAKE ONE!

With **8 models** of **Hopper Car Vibrators**, which range in speed from **2,000 Vibrations Per Minute (VPM)** to **15,000 VPM**, and range in power from **1,000 Force-Lbs.** to **14,000 Force-Lbs.**, we've got the Vibrator needed to empty your railcars in record time no matter what material is being unloaded.



CAR-ROCKER™
Dual Roller
Pocket Vibrators



CAR-ROCKER™
Turbine Pocket
Vibrator



RAIL-SHAKER™
Hopper Car
Pocket Vibrator



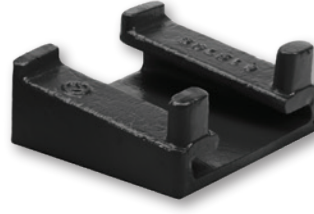
BRUTE®
Hopper Car
Vibrators



ROLL-A-VIBE
Hopper Car
Vibrator Lift Cart



Hopper Car
Pocket Bracket



Hopper Car
Pocket Bracket



Cradle Lug Bracket w/
Wedge Mount

***Cradle Head
Options for
any Vibrator!***

WORKMASTER®

WE FIND A WAY — OR MAKE ONE!

WORKMASTER® is a manufacturer of labor savings bulk material handling tools to help safely and efficiently unload, transport, store and process bulk solids from hopper bottom railcars, bulk trailers, bins, silos and chutes. To help Customers gain maximum benefit from our bulk materials handling tools and equipment, we also supply a complete line of operating, mounting, and maintenance products and accessories, such as Timers and Motor Controls, Vibrator Mounts, and Lubricating Oils to help keep your unloading site tools running longer and more efficiently. WORKMASTER products help Customers work more safely and efficiently, increase the lifespan of production-critical equipment, and decrease operating and maintenance costs of tools and equipment used in some of Industry's most dangerous, difficult, and dirty jobs.



Master Distributor

AIRMA TIC
WE'LL HANDLE IT.

airmatic.com

Ph: 215.333.5600

Em: infocenter@airmatic.com