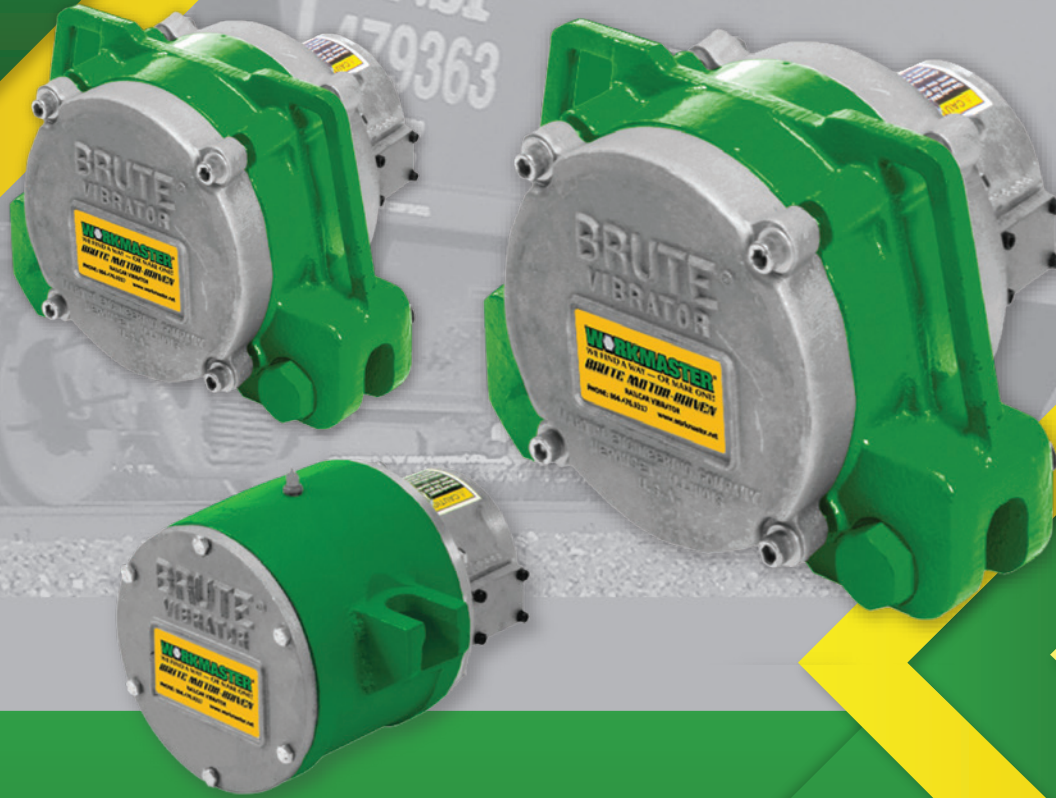


WORKMASTER®

WE FIND A WAY — OR MAKE ONE!



BRUTE®

HOPPER CAR VIBRATORS

Address: 284 Three Tun Rd.
Malvern PA, 19355
Phone: 267.350.2809
Email: info@workmaster.net

This pneumatic, low frequency but high force series of Vibrators offers 2 models of wedge mount **Pocket Vibrators** (the CC and CCV4), and a **Whole Car Vibrator** (CCV6) which clamp-mounts onto the hopper car's side sill. These motor-driven, adjustable eccentric-weight **BRUTE**[®] **Vibrators** are built for durability and power.



BRUTE[®]

The BRUTE[®] CC2.8-2A Pocket Vibrator Generates 3,800-VPM / 1,890 lbf; the CCV4-3-2A Pocket Vibrator, 4,900-VPM / 4,100 lbf; the CCV6-50-6A Whole Car Vibrator, 2,600-VPM / 9,600 lbf at 80 PSI.

HEAVY-DUTY CONSTRUCTION

High-Grade Ductile Iron Case provides maximum durability in the toughest applications.

EASY-TO-HANDLE

Dual Handle and Integral Clamp Foot (CCV Models) provide portability and positive mounting.

SAVE ENERGY

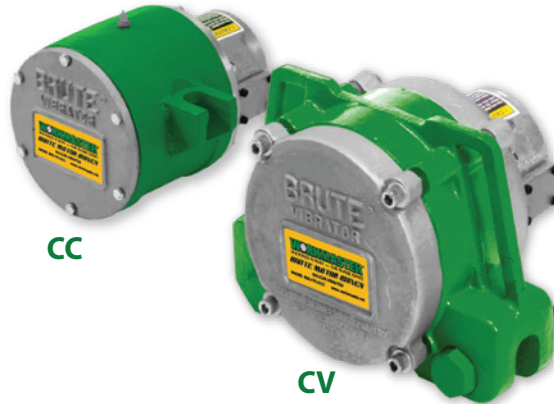
Powerful, efficient Motors for long service life and minimal power consumption.

VARIED APPLICATION RANGE

Adjustable eccentric-weights allow tuning of force output to match application.

REDUCE NOISE

Tapped Exhaust Port allows muffler installation to reduce operating noise.



CC

CV

Male Wedge Bracket Sold Separately

VIBRATOR	PART #
CC2.8-A	CC28A-GC
CCV4-A	CCV4-A-GC
CCV6-A	CCV6-A-GC

*AW: ADJUSTABLE WEIGHT

HEAVY-DUTY

POWERFUL

EASY-TO-HANDLE

EASY TO MAINTAIN

ASK US ABOUT OUR OTHER RAILCAR UNLOADING SOLUTIONS



GO-A8-PW

Pneumatic Hopper
Car Gate Opener



GO-A3-PW

Pneumatic Hopper
Car Gate Opener



GO-A13-HA

Pneumatic Hopper
Car Gate Opener



GO-A8-FW

Pneumatic Hopper
Car Gate Opener



GO-A2

Pneumatic Hopper
Car Gate Opener



GO-M04

Manual Hopper
Car Gate Opener



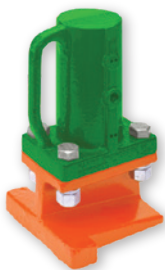
GO-M3

Manual Hopper
Car Gate Opener



GO-E2

Electric Hopper
Car Gate Opener



RAIL-SHAKER™
Hopper Car
Pocket Vibrator



CAR-ROCKER™
Hopper Car
Pocket Vibrator



BRUTE®
Hopper Car
Vibrators



WHIRLWIND™
Hopper Car
Pocket Vibrator



POCKETPATH
Hopper Car
Pocket Connectors

WORKMASTER®

WE FIND A WAY — OR MAKE ONE!

WORKMASTER® is a manufacturer of labor savings bulk material handling tools to help safely and efficiently unload, transport, store and process bulk solids from hopper bottom railcars, bulk trailers, bins, silos and chutes. To help Customers gain maximum benefit from our bulk materials handling tools and equipment, we also supply a complete line of operating, mounting, and maintenance products and accessories, such as Timers and Motor Controls, Vibrator Mounts, and Lubricating Oils to help keep your unloading site tools running longer and more efficiently. WORKMASTER products help Customers work more safely and efficiently, increase the lifespan of production-critical equipment, and decrease operating and maintenance costs of tools and equipment used in some of Industry's most dangerous, difficult, and dirty jobs.



Address: 284 Three Tun Rd.
Malvern PA, 19355
Phone: 267.350.2809
Email: info@workmaster.net