

# WORKMASTER®

WE FIND A WAY — OR MAKE ONE!



## CAPSTAN REPAIR

### RENEW ATTACHMENT & SWAGE KIT

Address:

284 Three Tun Rd.  
Malvern, PA 19355

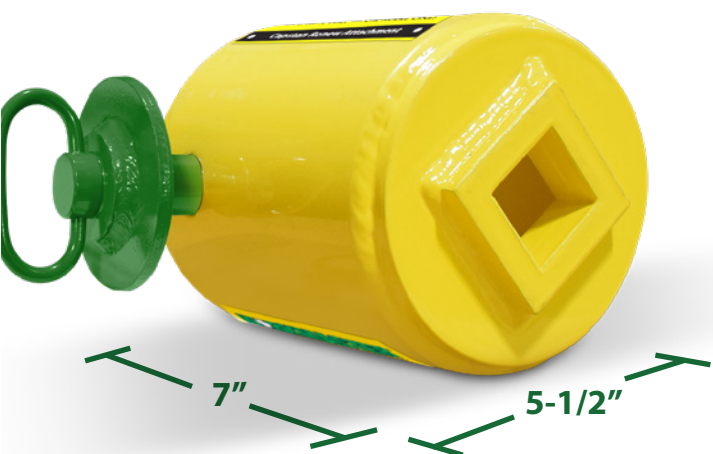
Phone:

267.350.2809

Email:

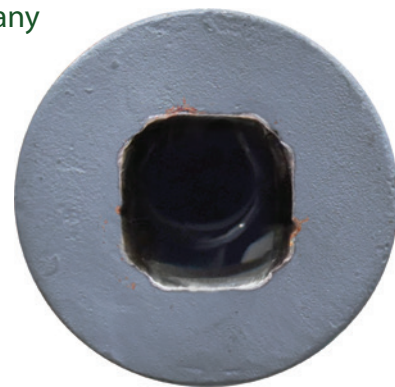
[info@workmaster.net](mailto:info@workmaster.net)

## CAPSTAN RENEW ATTACHMENT



Opening hopper car slide gates with a completely worn Capstan Barrel can be a problem. When the Barrel's female square is rounded-off, it resists any effort to get a grip with a Gate Opener Drive Fitting. Busy unloading sites have no time to change-out the Barrel or, even worse, shunt the hopper car to a siding for repair.

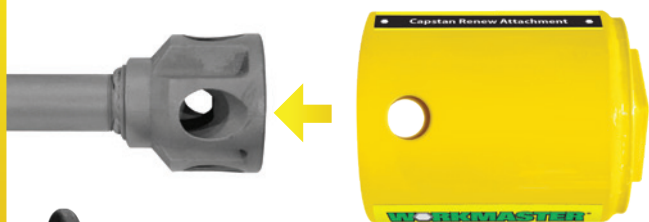
**WORKMASTER** has a solution for the problem – the **Capstan Renew Attachment**.



The Attachment is an easy-to-use adapter that slips over the Barrel and then pin-locks in place to provide a perfectly formed female square socket for the Gate Opener's Drive Fitting. The Attachment weighs < 15 lbs. so it can be easily and rapidly moved from gate to gate, and its lock-in-place feature ensures the capstan stability needed to accept the Opener's power output.

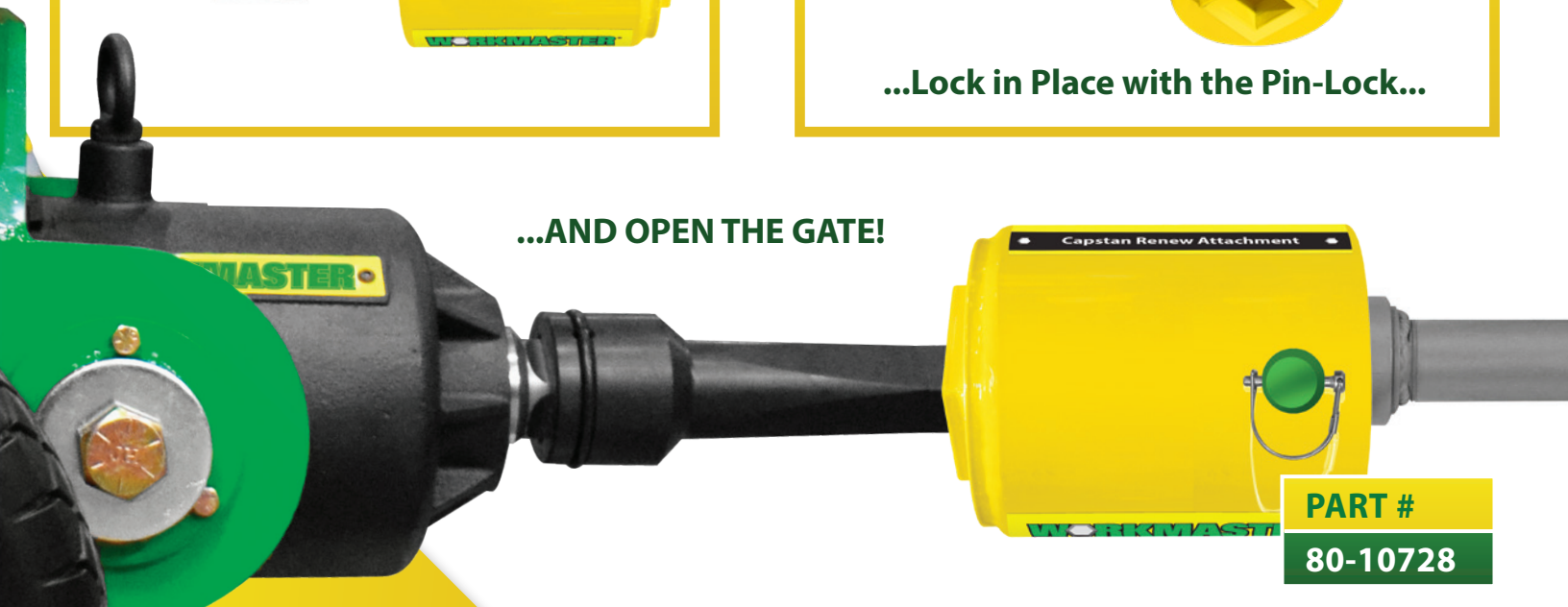
***A Perfect Fit, Every Time!***

**Just Slip Attachment Over the Barrel...**



**...Lock in Place with the Pin-Lock...**

**...AND OPEN THE GATE!**



**PART #**

**80-10728**



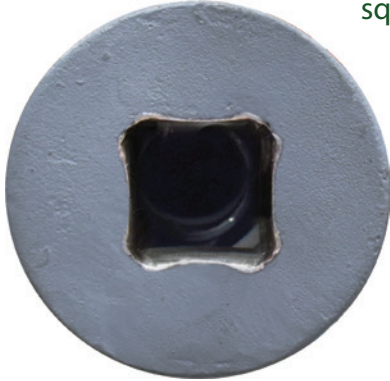
# CAPSTAN SWAGE KIT

**WORKMASTER®**  
WE FIND A WAY — OR MAKE ONE!

For Hopper Car Capstan Barrels that are worn but salvageable, we also offer a **Capstan Swage Kit**. This enables a user to

square-up a worn female socket with just a few hits of a hand-held, 4140-steel Swage Tool with our no rebound Dead-blow Hammer.

Regular use of the Swage Kit reduces wear on the Opener's Drive Fitting.



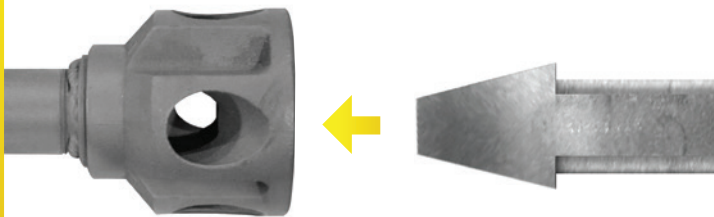
**PART #**

**33-11120**

***WORKMASTER®'s tapered Swage Kit can bring new life to worn capstans!***

**...Strike with the Dead-Blow Hammer...**

**Just Place Swage Tool in the Barrel...**



**...AND OPEN THE GATE!**



# WORKMASTER®

## WE FIND A WAY — OR MAKE ONE!

**WORKMASTER** specializes in manufacturing labor-saving bulk material handling tools designed to facilitate the safe and efficient unloading, transport, storage, and processing of bulk solids. Catering to the needs of the agriculture, manufacturing, mining, and concrete construction sectors, WORKMASTER provides a distinctive line of bulk solids handling equipment. Our innovative products empower plant workers to safely accomplish tasks effortlessly and swiftly such as opening and unloading hopper bottom railcars and dry bulk trailers, ensuring the smooth flow of material from bins and silos, and improving the consolidation and finishing of freshly poured concrete through form, table, and surface vibration techniques. Our products play a pivotal role in enhancing safety and efficiency for our customers, while also extending the lifespan of critical production equipment. By reducing operating and maintenance costs, our tools prove invaluable for tackling some of the industry's most hazardous, challenging, and demanding tasks.

